

2675FR / 2650FR Series Electric Rim Strikes

Installation Instructions



ROFU Security International Corp.
6818 S 220th ST
Kent, WA 98032
(253) 922-1828
www.ROFU.com
OrderEntry@ROFU.com

The 2675FR / 2650FR series electric rim strikes are surface mounted and designed to accommodate rim exit devices with a Pullman latch. No cutting on the frame is required for installation. These strikes are field selectable for fail-safe or fail-secure mode and operate on dual voltage 12/24V DC. Available with optional latch monitor.

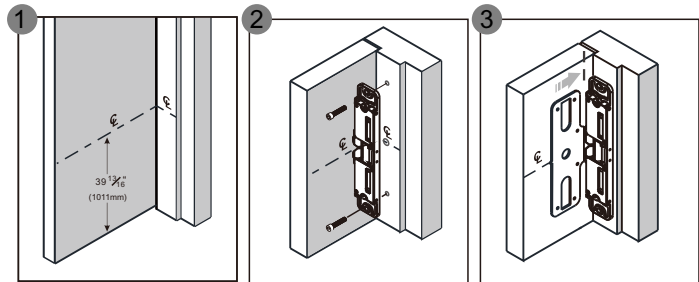
Specifications

Model	2675FR 2675FRM	2650FR 2650FRM
Operating Voltage	12/24V DC	
Current Draw	540 mA/12V DC, 270 mA/24V DC	
Operating Temperature	14°F to 120°F (-10°C~49°C)	
Humidity	0~85% non-condensing	
Static Strength	1500 lb (680 kg)	
Dynamic Strength	70 ft/lb	
Endurance Rating	250,000 cycles (UL tested) 1,000,000 cycles (Factory tested)	
Lock Mode	Field selectable fail-safe or fail-secure	
Performance Level	Destructive Attack: Level I Line Security: Level I Standby Power: Level I Endurance: Level IV	
Finish	Stainless steel US32D/Black US19	
Frame Application	Metal or Wood	
Latch Throw (Housing Thickness)	3/4"	1/2"

UL Requirements

- For indoor use only
- Wiring methods shall be in accordance with NFPA 70.
- The 2675FR/2650FR series are intended to be used with UL Listed Exit Hardware.
- The 2675FR/2650FR series shall not impair the operation of panic hardware mounted on the door.
- The 2675FR/2650FR series electric strikes are access control unit accessories, intended to be controlled by an access control system. The access control systems purpose is to provide a means for controlling the locking and unlocking of external and internal doors of a premise.

Surface Install



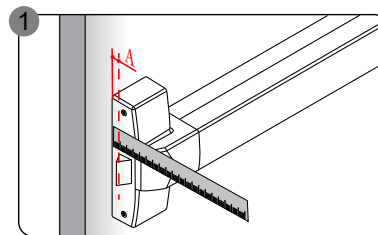
1 Measure 39 13/16" (1011mm) up from finished floor and mark strike centerline on door. Transfer centerline to frame.

2 Align strike on centerline and mark two slotted holes. Drill holes and install strike to frame.

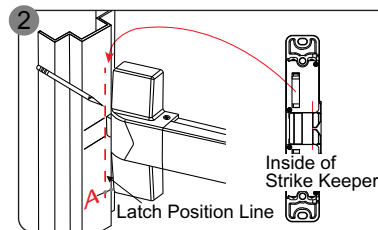
3 Align template on centerline and against strike.

Surface Installation (For Exit Device Already Installed)

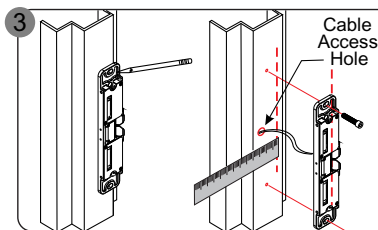
Model 2650FR is used as example below.



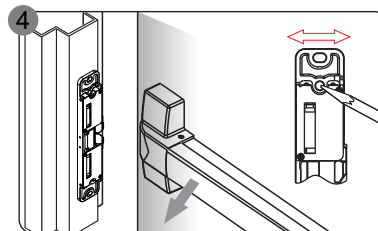
a. Measure the exit device latch position on the door.



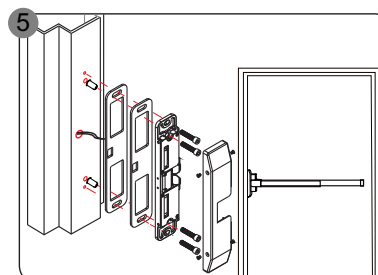
a. Close the door and mark latch position on the frame.
b. The latch position line will correspond with the inside of strike keeper as shown.



a. Position the strike on the frame according to the marked latch position.
b. Use the strike as a template; mark and drill cable access hole and two mounting holes.
c. Loosely mount the strike with Phillips flat head screws.

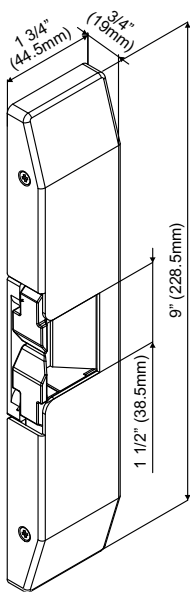


a. Check latchbolt interaction and adjust the strike horizontally until the door latches properly.
b. Tighten the two mounting screws and mark remaining screw holes.

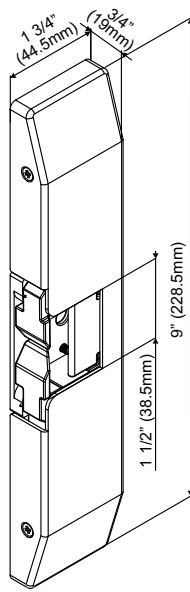


a. Remove the strike and drill holes.
b. Connect the wires.
c. Insert the blind nuts into the holes and re-install the strike.
d. Add spacers to adjust the gap between strike and exit device if necessary.
e. Permanently secure the strike with the hex socket cap screws into the blind nuts.

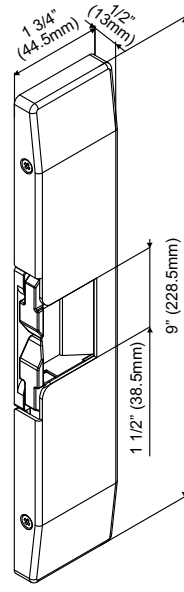
Dimensions



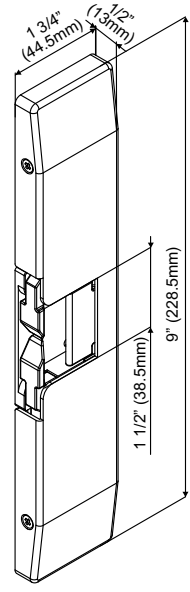
2675FR



2675FRM
(Model with Latch Monitor)



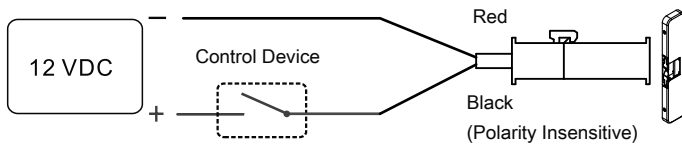
2650FR



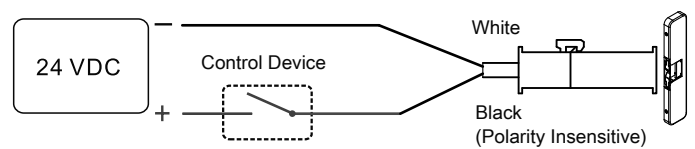
2650FRM
(Model with Latch Monitor)

Wiring Diagrams

For 12V DC operation:



For 24V DC operation:

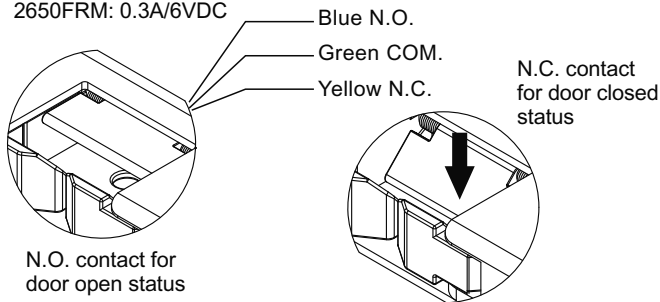


Latch Monitor (Option)

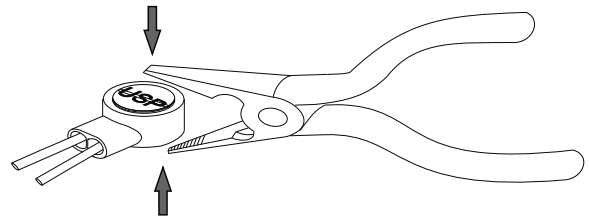
Contact Rating

2675FRM: 1.5A/40VDC

2650FRM: 0.3A/6VDC



Installing the Crimp Connectors



Place the wire inside the connector and use pliers to press down on the head of the connector evenly.

Changing Fail-Safe / Fail-Secure

Remove locking screw #1, loosen, slide and tighten sliding screw #2. Reinsert and tighten locking screw #1 to the desired fail-safe or fail-secure setting.

