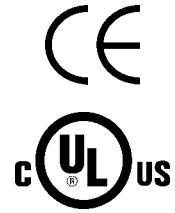
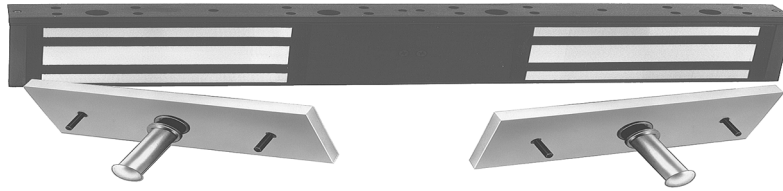




ROFU[®] MAGNETIC DOOR LOCKING DEVICE MODEL 8025 DOUBLE MINI-MAGNET



The ROFU model 8025 magnetic lock is a mini-mag based on the ROFU 8005 series. The magnetic lock is designed to accommodate low door clearance or minimum security applications. It is a smaller version of ROFU's popular 8011-LC model.

STANDARD FEATURES

- Holding Force: 650 lbs. (295 Kg.) per side.
- Easy Installation: Versatile mounting brackets for new and existing doors and frames.
- Fail Safe: Releases instantly when power is disconnected. No residual magnetism.
- Fail Alarm: May be released upon activation of fire alarm.
- Housing: Attractive, heavy duty, anodized extruded aluminum
- Voltage: 12VDC or 24VDC
- Current Draw: 415 mA at 12 VDC per block
215 mA at 24 VDC per block
- Mounting hardware included with unit for outswinging doors. Optional Z-Bracket required for inswinging door
- Limited Lifetime Warranty

SPECIFICATIONS

- Magnet Size: 19³/₄" x 1⁵/₈" x 1" (LxHxW)
(502 x 42 x 25 mm)
- Armature Size: 7¹/₄" x 1¹/₂" x 1¹/₂" (LxHxW)
(185 x 38 x 12 mm)
- Finish: xUS28 or (xUS40 Available as Special Order)

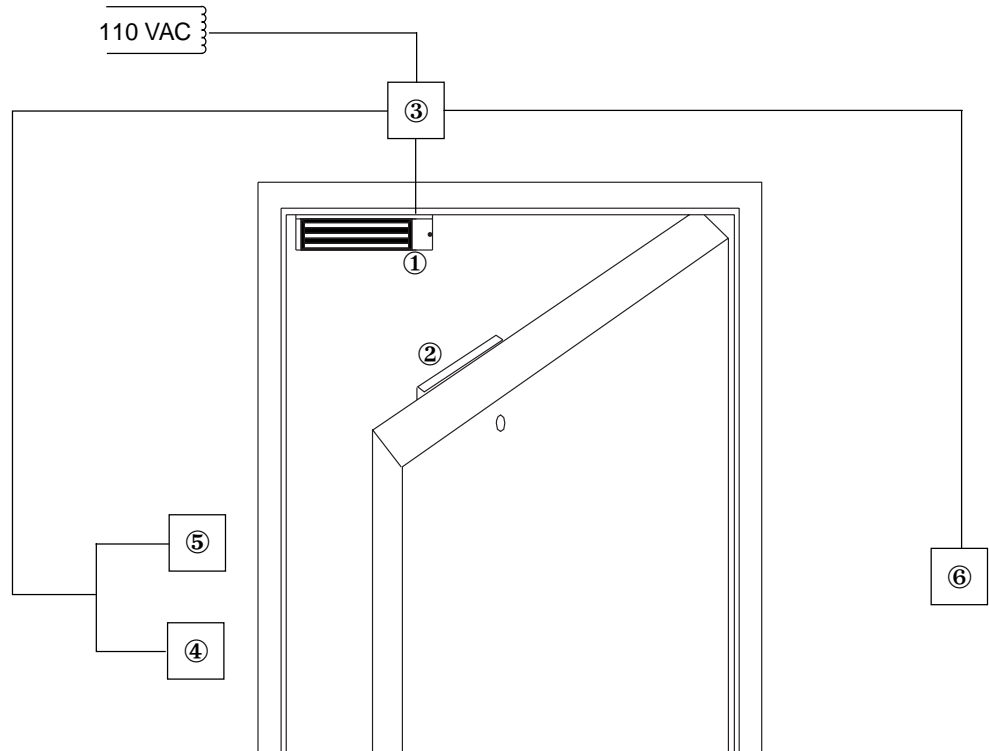
OPTIONAL FEATURES

- Z-Bracket for inswinging door, #21030, requires two.

NOT TO SCALE - TECHNICAL DATA SUBJECT TO CHANGE WITHOUT NOTICE

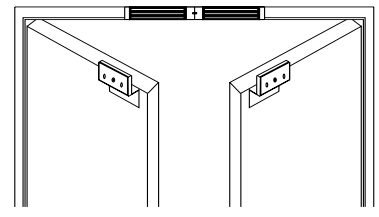
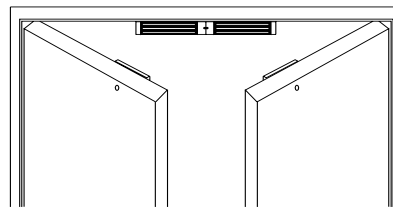
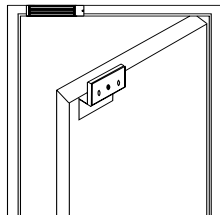
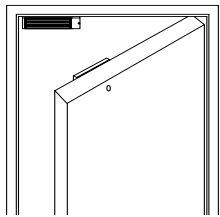


TYPICAL INSTALLATION ROFU® MODEL 8005 & 8025



8005

8025



Outswinging door

Inswinging door with Z-Bracket

Outswinging doors

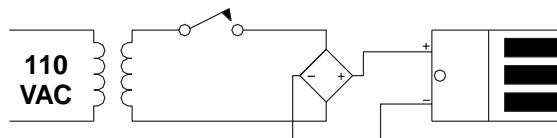
Inswinging doors with Z-Bracket

- 1 ROFU Magnet 8005 or 8025
- 2 Armature plate
- 3 DC power supply
- 4 Access Controls - key switch
- 5 Request to exit button
- 6 Remote release

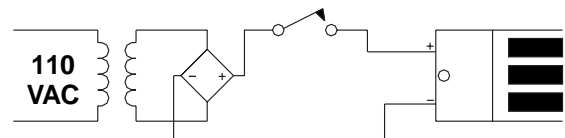
SWITCH OR SOLID STATE SWITCHING DEVICE

IMPORTANT: THE LOCAL ON/OFF SWITCH MUST BE WIRED BETWEEN DC SOURCE AND MAGNET

SWITCH OR SOLID STATE SWITCHING DEVICE



WRONG



RIGHT

NOT TO SCALE - TECHNICAL DATA SUBJECT TO CHANGE WITHOUT NOTICE